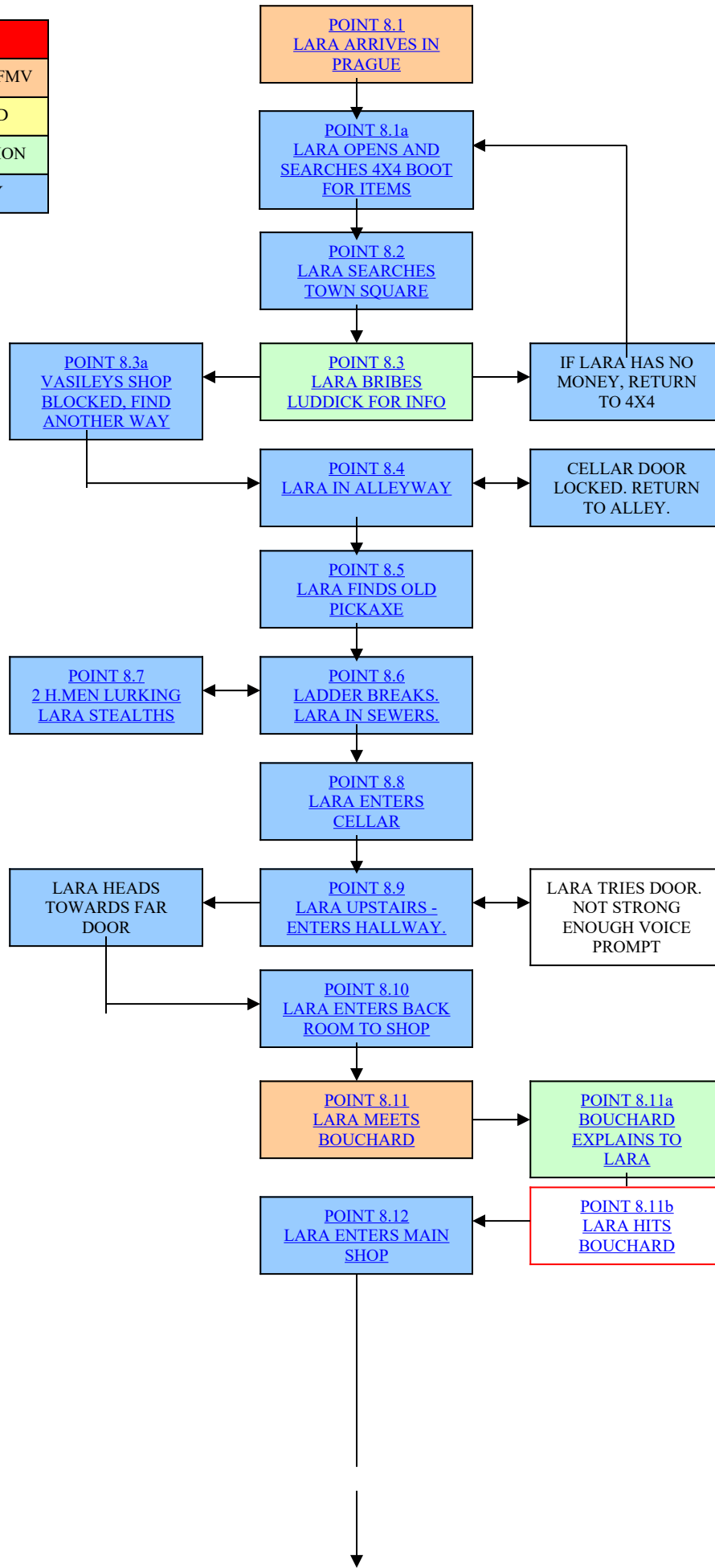
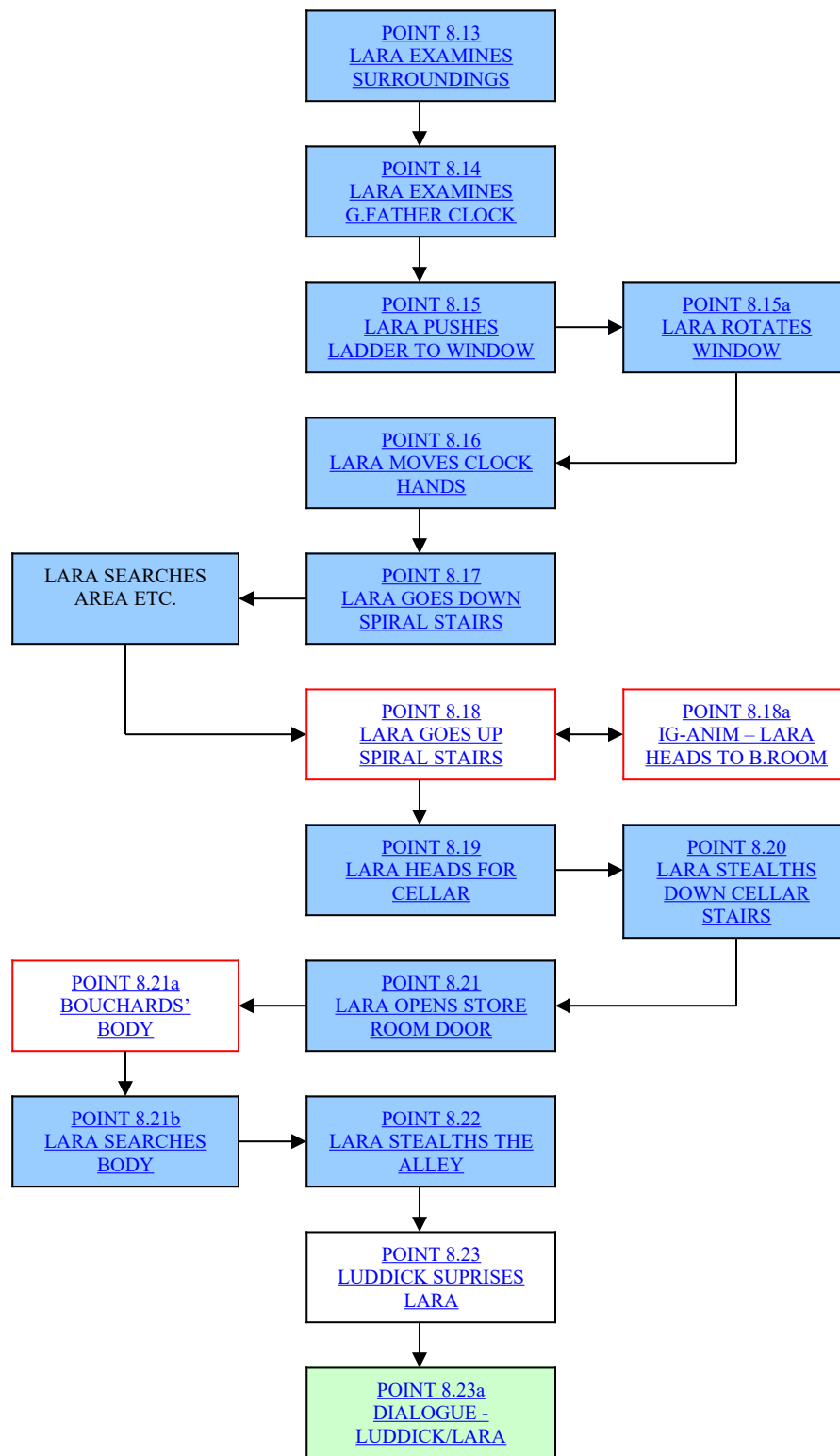


PRAGUE LOCATION 1 – THE CRIME SCENE

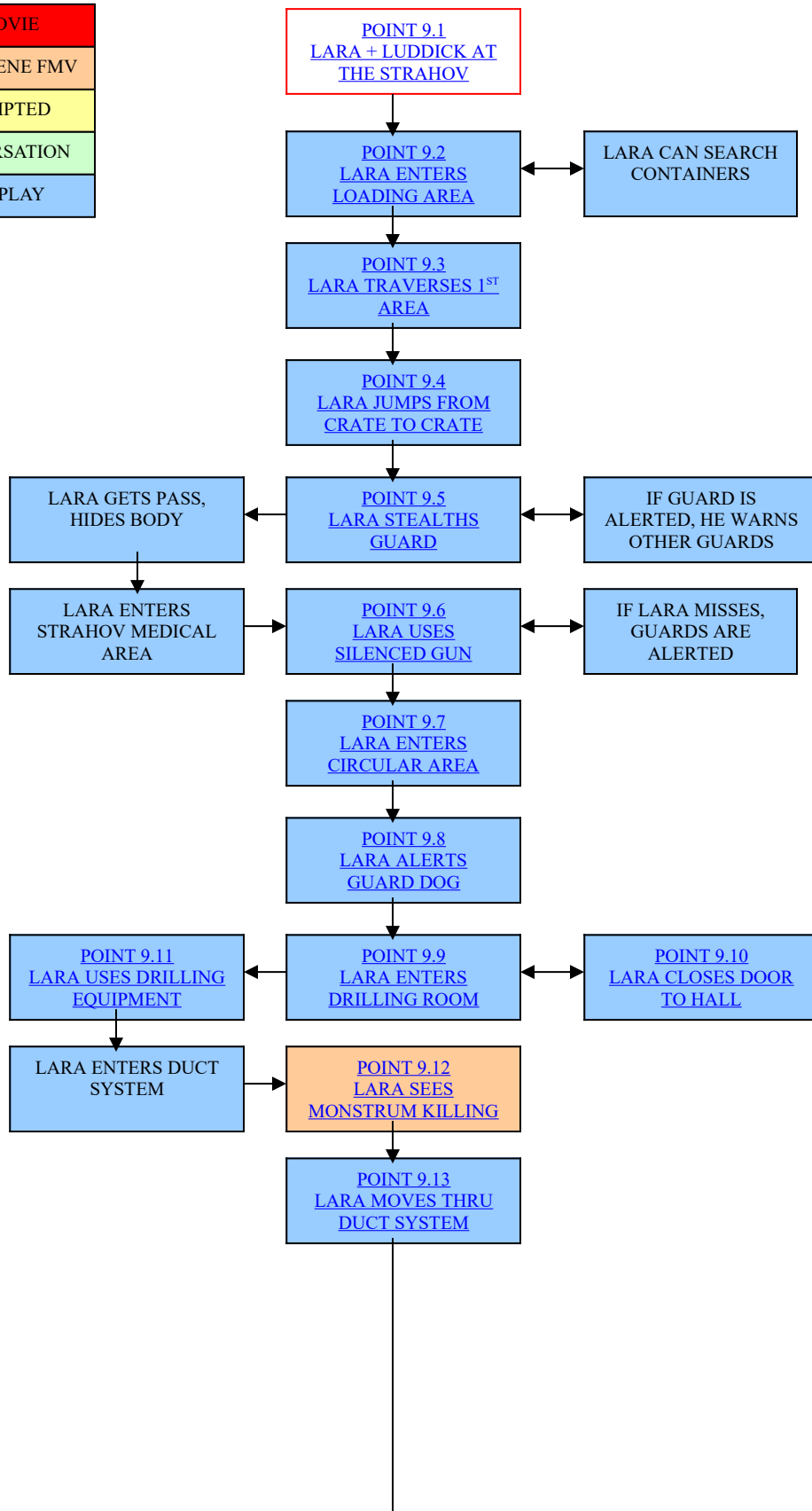
RED = FMV MOVIE
ORANGE = CUTSCENE FMV
YELLOW = SCRIPTED
GREEN = CONVERSATION
BLUE = GAME PLAY

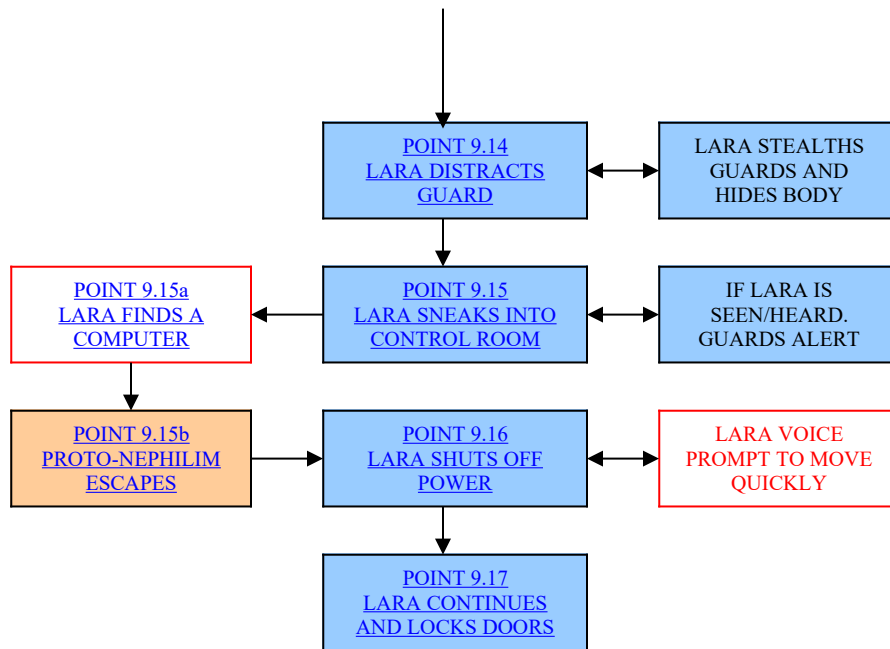




PRAGUE LOCATION 2 – THE STRAHOV COMPLEX

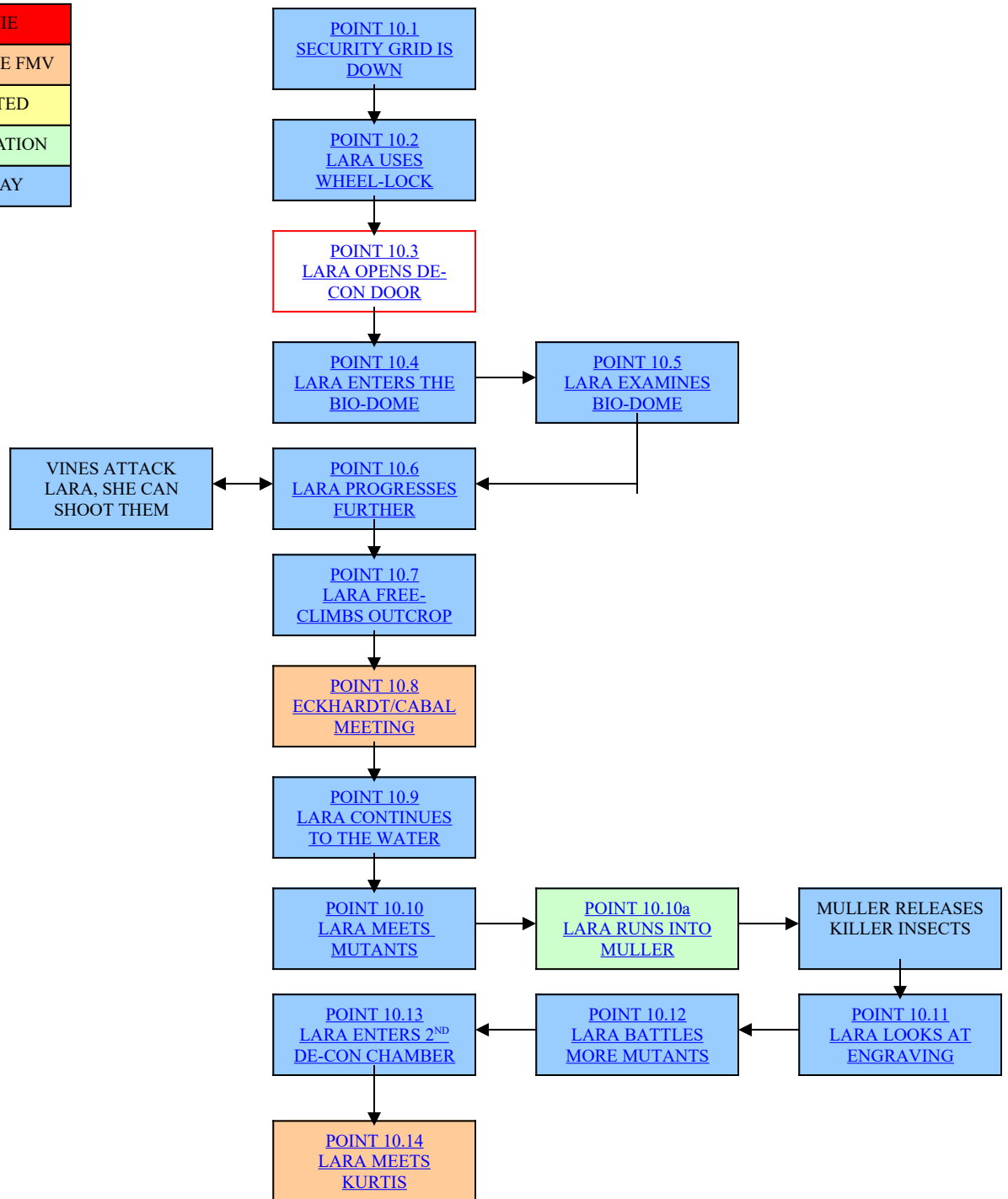
RED = FMV MOVIE
ORANGE = CUTSCENE FMV
YELLOW = SCRIPTED
GREEN = CONVERSATION
BLUE = GAME PLAY





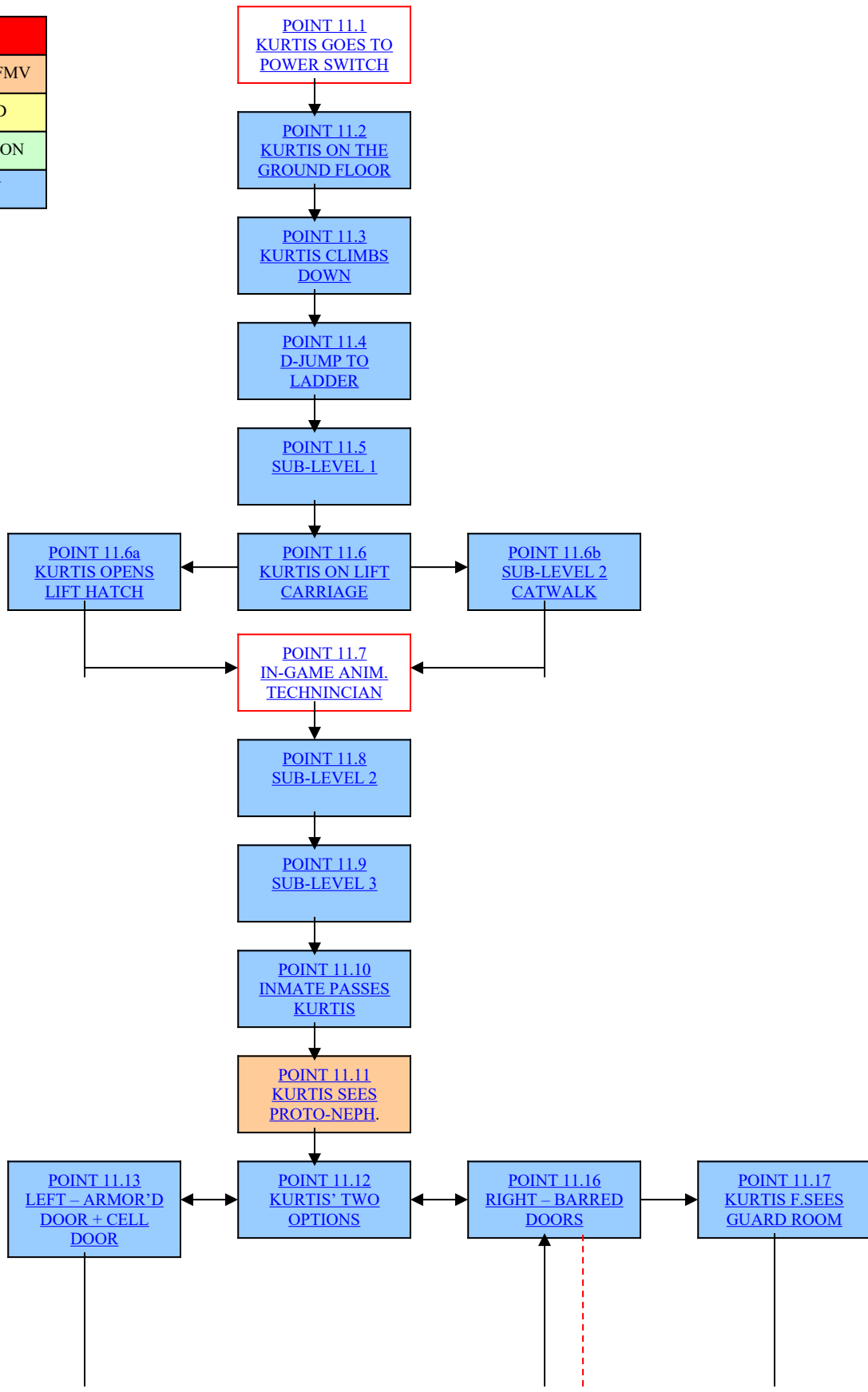
PRAGUE LOCATION 3 – BOTANICAL INSTITUTE pt.1

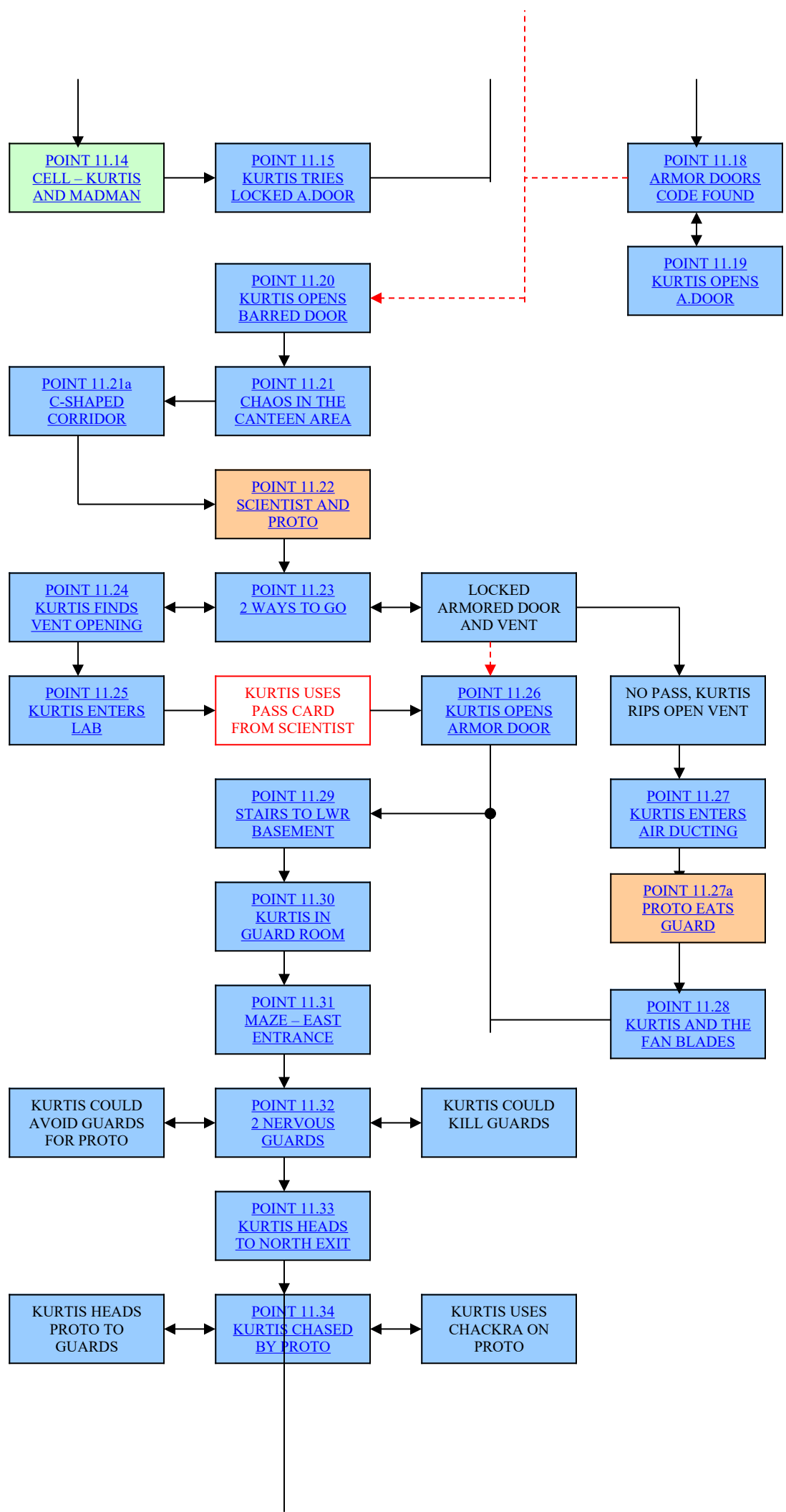
RED = FMV MOVIE
ORANGE = CUTSCENE FMV
YELLOW = SCRIPTED
GREEN = CONVERSATION
BLUE = GAME PLAY

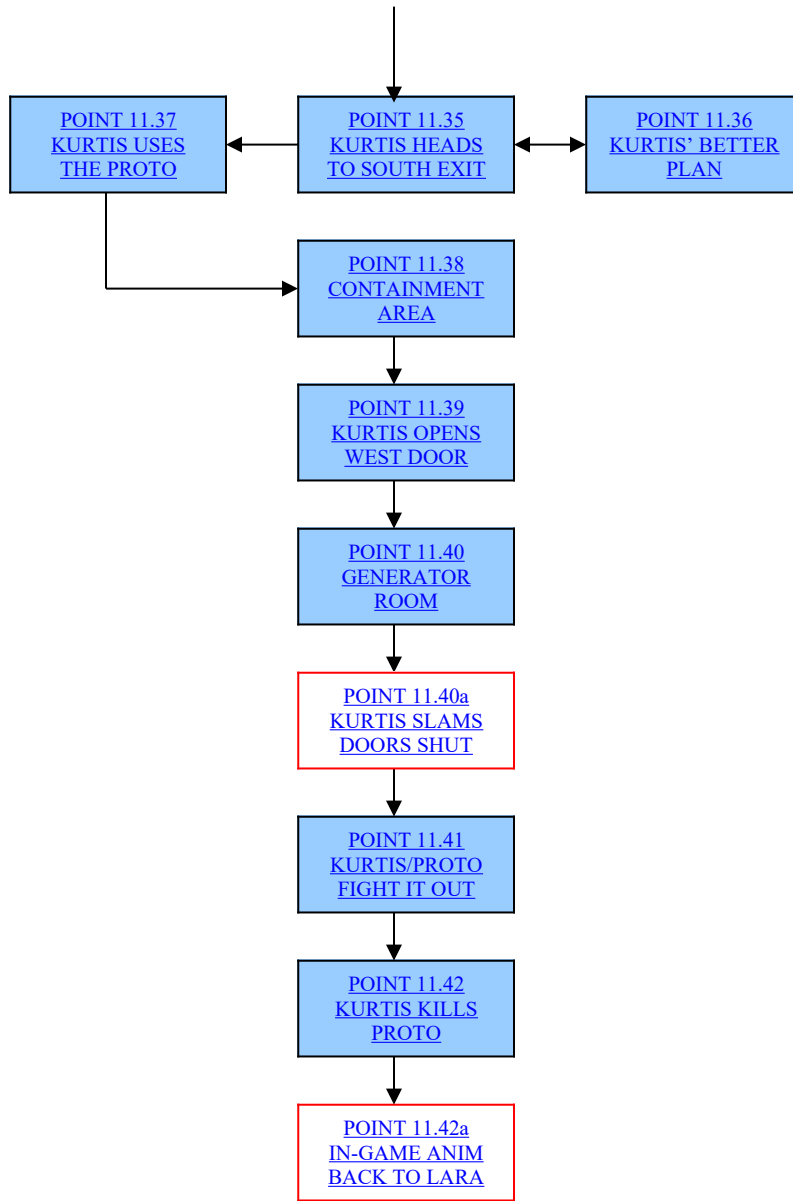


PRAGUE LOCATION 4 – THE SANITORIUM

RED = FMV MOVIE
ORANGE = CUTSCENE FMV
YELLOW = SCRIPTED
GREEN = CONVERSATION
BLUE = GAME PLAY

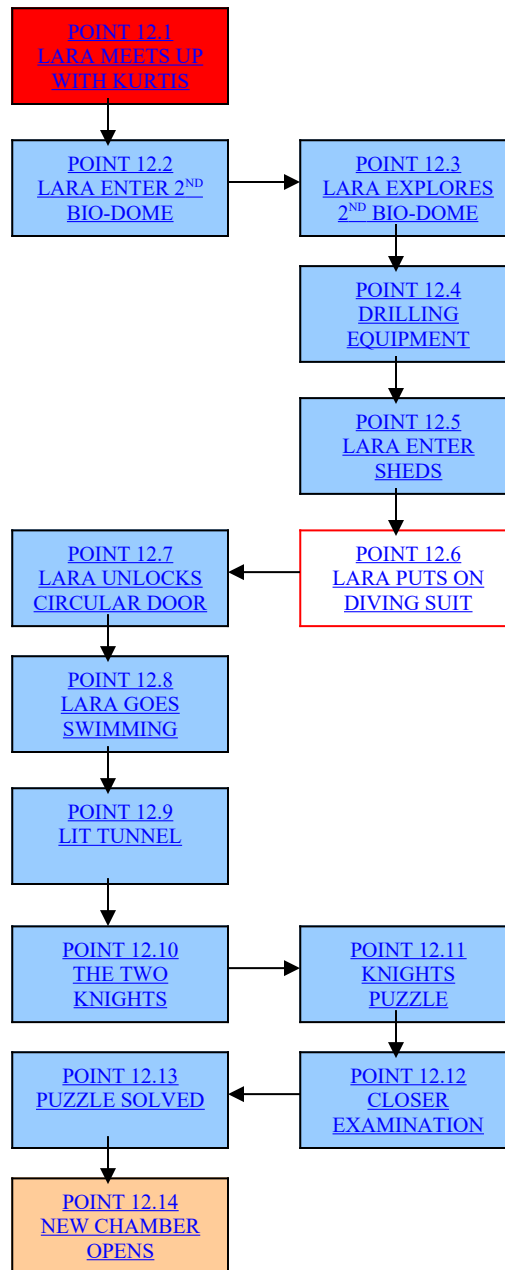






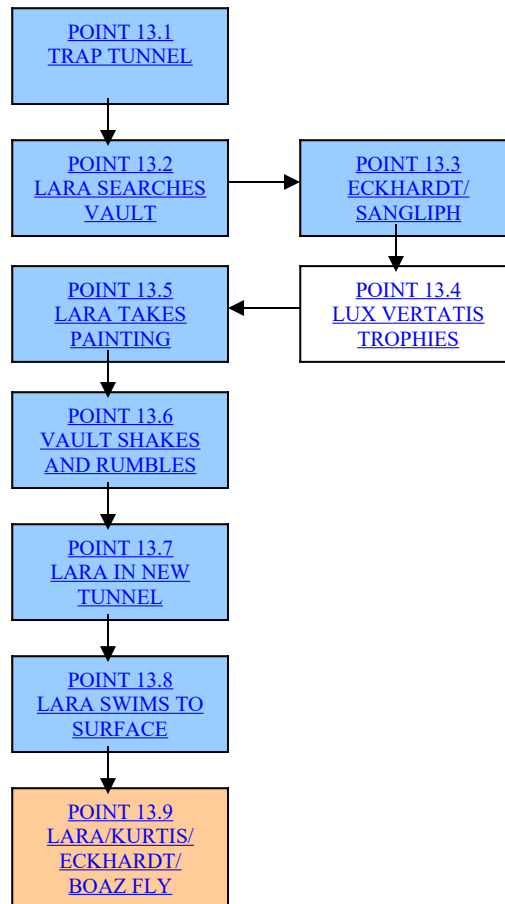
PRAGUE LOCATION 5 – BOTANICAL INSTITUTE pt.2

RED = FMV MOVIE
ORANGE = CUTSCENE FMV
YELLOW = SCRIPTED
GREEN = CONVERSATION
BLUE = GAME PLAY



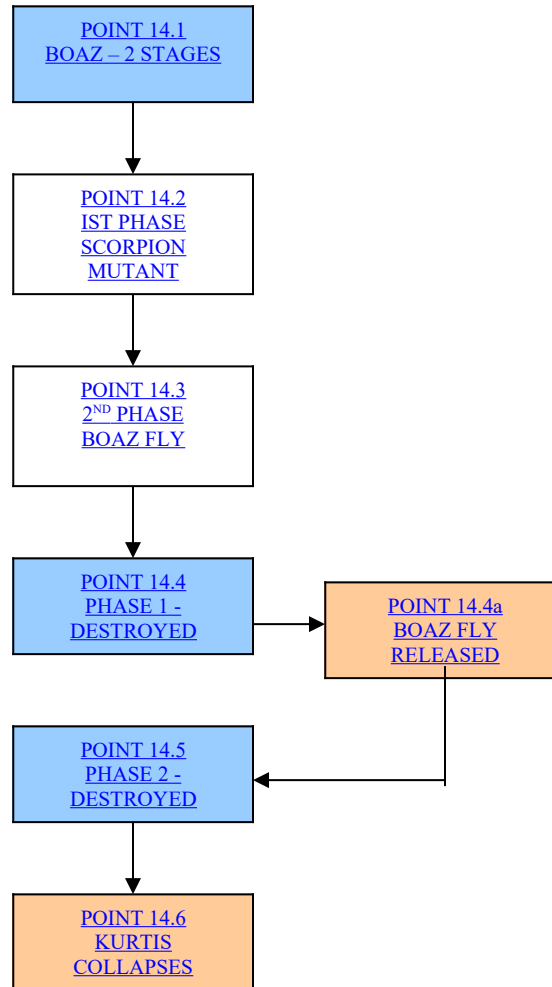
PRAGUE LOCATION 6 – THE VAULT OF TROPHIES

RED = FMV MOVIE
ORANGE = CUTSCENE FMV
YELLOW = SCRIPTED
GREEN = CONVERSATION
BLUE = GAME PLAY



PRAGUE LOCATION 7 – THE BOAZ CREATURE

RED = FMV MOVIE
ORANGE = CUTSCENE FMV
YELLOW = SCRIPTED
GREEN = CONVERSATION
BLUE = GAME PLAY



PRAGUE LOCATION 8 – ALCHEMIST LAB

RED = FMV MOVIE
ORANGE = CUTSCENE FMV
YELLOW = SCRIPTED
GREEN = CONVERSATION
BLUE = GAME PLAY

POINT 15.1
LARA CHASES
ECKHARDT



POINT 15.2
ECKHARDT
GLOVES BRIDGE



POINT 15.3
ECK GLOVES
MOAT



POINT 15.4
LARA AT LAB
ENTRANCE



POINT 15.5
THE LAB



POINT 15.6
LARA SEARCHES
THROUGH LAB



POINT 15.7
GLOWING
SHARDS



POINT 15.8
THE SLEEPER



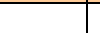
POINT 15.9
LARA LOCATES
3RD SHARD



POINT 15.10
LARA HAS 3RD
SHARD



POINT 15.10a
ECK WORKS ON
SLEEPER



LARA COMES
ACROSS INFO:

- *PROTOTYPES
- *RECORDS
- *NEPHILIM PACT
- *SLEEPER INFO

